

527 Ashton Manor Dr.
Loganville

159



PROSPECTOR'S REQUIREMENTS

- 1. THE PROSPECTOR SHALL BE A PERSON WHO IS AT LEAST 18 YEARS OF AGE AND WHO IS NOT A MINOR.
- 2. THE PROSPECTOR SHALL BE A PERSON WHO IS NOT A MINOR AND WHO IS NOT A PERSON WHO IS UNDER A COURT ORDER OR OTHER LEGAL PROCEEDING THAT RESTRICTS HIS OR HER ABILITY TO CONTRACT.
- 3. THE PROSPECTOR SHALL BE A PERSON WHO IS NOT A MINOR AND WHO IS NOT A PERSON WHO IS UNDER A COURT ORDER OR OTHER LEGAL PROCEEDING THAT RESTRICTS HIS OR HER ABILITY TO CONTRACT.
- 4. THE PROSPECTOR SHALL BE A PERSON WHO IS NOT A MINOR AND WHO IS NOT A PERSON WHO IS UNDER A COURT ORDER OR OTHER LEGAL PROCEEDING THAT RESTRICTS HIS OR HER ABILITY TO CONTRACT.
- 5. THE PROSPECTOR SHALL BE A PERSON WHO IS NOT A MINOR AND WHO IS NOT A PERSON WHO IS UNDER A COURT ORDER OR OTHER LEGAL PROCEEDING THAT RESTRICTS HIS OR HER ABILITY TO CONTRACT.
- 6. THE PROSPECTOR SHALL BE A PERSON WHO IS NOT A MINOR AND WHO IS NOT A PERSON WHO IS UNDER A COURT ORDER OR OTHER LEGAL PROCEEDING THAT RESTRICTS HIS OR HER ABILITY TO CONTRACT.
- 7. THE PROSPECTOR SHALL BE A PERSON WHO IS NOT A MINOR AND WHO IS NOT A PERSON WHO IS UNDER A COURT ORDER OR OTHER LEGAL PROCEEDING THAT RESTRICTS HIS OR HER ABILITY TO CONTRACT.
- 8. THE PROSPECTOR SHALL BE A PERSON WHO IS NOT A MINOR AND WHO IS NOT A PERSON WHO IS UNDER A COURT ORDER OR OTHER LEGAL PROCEEDING THAT RESTRICTS HIS OR HER ABILITY TO CONTRACT.
- 9. THE PROSPECTOR SHALL BE A PERSON WHO IS NOT A MINOR AND WHO IS NOT A PERSON WHO IS UNDER A COURT ORDER OR OTHER LEGAL PROCEEDING THAT RESTRICTS HIS OR HER ABILITY TO CONTRACT.
- 10. THE PROSPECTOR SHALL BE A PERSON WHO IS NOT A MINOR AND WHO IS NOT A PERSON WHO IS UNDER A COURT ORDER OR OTHER LEGAL PROCEEDING THAT RESTRICTS HIS OR HER ABILITY TO CONTRACT.



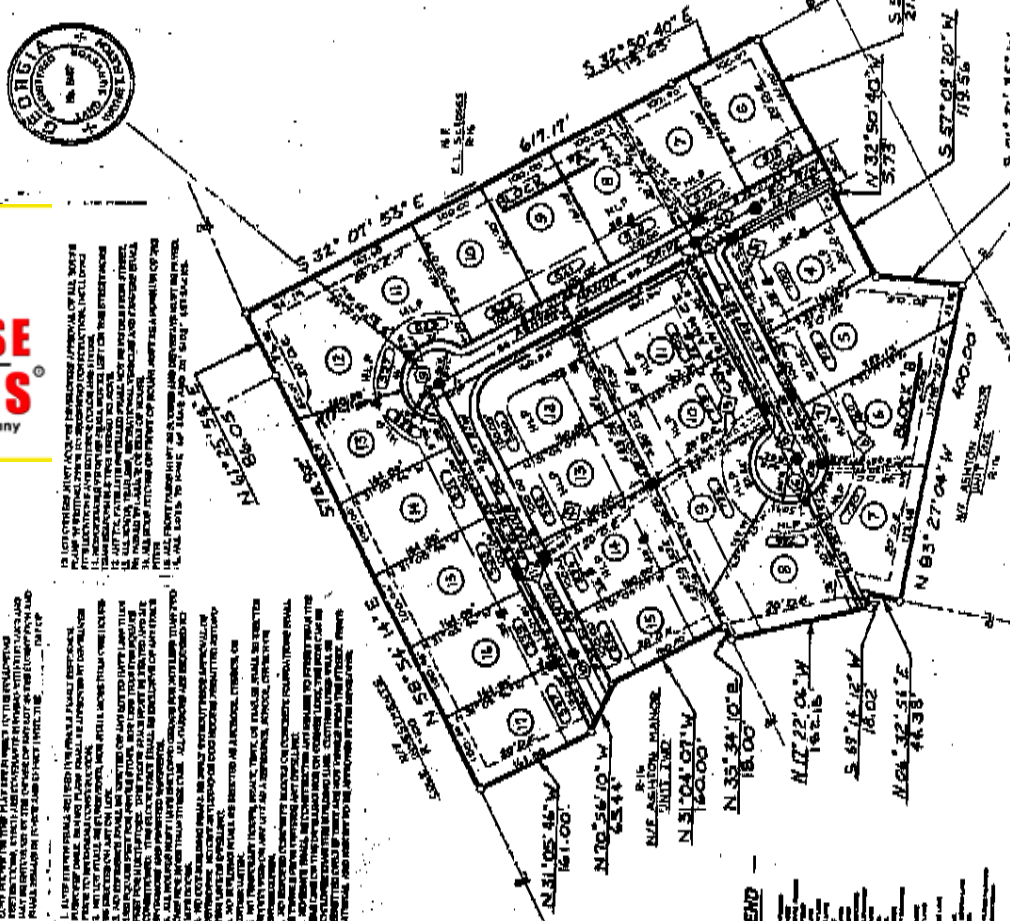
It is hereby certified that this plat has been prepared from a correct copy of the original survey and that all measurements shown thereon are true and correct. This plat was made in accordance with the provisions of the Georgia Surveying Code, Chapter 42, Title 47, Code of Laws of Georgia, 1969, and the Georgia Surveying Code, Chapter 42, Title 47, Code of Laws of Georgia, 1977, and the Georgia Surveying Code, Chapter 42, Title 47, Code of Laws of Georgia, 1980, and the Georgia Surveying Code, Chapter 42, Title 47, Code of Laws of Georgia, 1983, and the Georgia Surveying Code, Chapter 42, Title 47, Code of Laws of Georgia, 1986, and the Georgia Surveying Code, Chapter 42, Title 47, Code of Laws of Georgia, 1989, and the Georgia Surveying Code, Chapter 42, Title 47, Code of Laws of Georgia, 1992, and the Georgia Surveying Code, Chapter 42, Title 47, Code of Laws of Georgia, 1995, and the Georgia Surveying Code, Chapter 42, Title 47, Code of Laws of Georgia, 1998, and the Georgia Surveying Code, Chapter 42, Title 47, Code of Laws of Georgia, 2001, and the Georgia Surveying Code, Chapter 42, Title 47, Code of Laws of Georgia, 2004, and the Georgia Surveying Code, Chapter 42, Title 47, Code of Laws of Georgia, 2007.

DATE: 7-22-05
 COUNTY: CLATSOP
 CITY/TOWN: SEASIDE
 STATE OF OREGON

ADJUSTED AREA TABLE

Lot No.	Area (Acres)	Area (Sq. Ft.)
1	0.10	6,912.88
2	0.10	6,912.88
3	0.10	6,912.88
4	0.10	6,912.88
5	0.10	6,912.88
6	0.10	6,912.88
7	0.10	6,912.88
8	0.10	6,912.88
9	0.10	6,912.88
10	0.10	6,912.88
11	0.10	6,912.88
12	0.10	6,912.88
13	0.10	6,912.88
14	0.10	6,912.88
15	0.10	6,912.88
16	0.10	6,912.88
17	0.10	6,912.88
18	0.10	6,912.88
19	0.10	6,912.88
20	0.10	6,912.88
21	0.10	6,912.88
22	0.10	6,912.88
23	0.10	6,912.88
24	0.10	6,912.88
25	0.10	6,912.88
26	0.10	6,912.88
27	0.10	6,912.88
28	0.10	6,912.88
29	0.10	6,912.88
30	0.10	6,912.88
31	0.10	6,912.88
32	0.10	6,912.88
33	0.10	6,912.88
34	0.10	6,912.88
35	0.10	6,912.88
36	0.10	6,912.88
37	0.10	6,912.88
38	0.10	6,912.88
39	0.10	6,912.88
40	0.10	6,912.88
41	0.10	6,912.88
42	0.10	6,912.88
43	0.10	6,912.88
44	0.10	6,912.88
45	0.10	6,912.88
46	0.10	6,912.88
47	0.10	6,912.88
48	0.10	6,912.88
49	0.10	6,912.88
50	0.10	6,912.88
51	0.10	6,912.88
52	0.10	6,912.88
53	0.10	6,912.88
54	0.10	6,912.88
55	0.10	6,912.88
56	0.10	6,912.88
57	0.10	6,912.88
58	0.10	6,912.88
59	0.10	6,912.88
60	0.10	6,912.88
61	0.10	6,912.88
62	0.10	6,912.88
63	0.10	6,912.88
64	0.10	6,912.88
65	0.10	6,912.88
66	0.10	6,912.88
67	0.10	6,912.88
68	0.10	6,912.88
69	0.10	6,912.88
70	0.10	6,912.88
71	0.10	6,912.88
72	0.10	6,912.88
73	0.10	6,912.88
74	0.10	6,912.88
75	0.10	6,912.88
76	0.10	6,912.88
77	0.10	6,912.88
78	0.10	6,912.88
79	0.10	6,912.88
80	0.10	6,912.88
81	0.10	6,912.88
82	0.10	6,912.88
83	0.10	6,912.88
84	0.10	6,912.88
85	0.10	6,912.88
86	0.10	6,912.88
87	0.10	6,912.88
88	0.10	6,912.88
89	0.10	6,912.88
90	0.10	6,912.88
91	0.10	6,912.88
92	0.10	6,912.88
93	0.10	6,912.88
94	0.10	6,912.88
95	0.10	6,912.88
96	0.10	6,912.88
97	0.10	6,912.88
98	0.10	6,912.88
99	0.10	6,912.88
100	0.10	6,912.88

GENERAL NOTES:
 1. Zoning is R-2.5.
 2. Minimum lot area is 15,200 square feet.
 3. No part of this plat is to be used as a building lot.
 4. Total area for 100 lots is 6,912.88 acres.
 5. Density for 100 lots on 6,912.88 acres is 2.19 lots per acre.
 6. Minimum street width shall be 35 feet.
 7. Minimum front yard shall be 15,000 square feet.



APPROXIMATE LAMB APT. LINE
 DATE: 7-22-05
 DRAWN BY: R. KEMPER
 CHECKED BY: J. HARRIS
 COUNTY: CLATSOP
 CITY/TOWN: SEASIDE
 STATE OF OREGON

DESIGNER:
 CORNERSTONE DEVELOPMENT
 CONSULTANTS, INC.
 P.O. BOX 625
 LILBUEN, GA 30247
 CONTACT: WAYNE EBLETON
 PHONE: 504-9116

DEVELOPER:
 DIVERSIFIED DEVELOPMENT CO., INC.
 3900 GIBBUE TRAIL
 LOGANVILLE, GA 30040
 24 HOUR CONTACT:
 DANNY HERRMANN
 PHONE: 486-3868

BLOCK CHART
 BLOCK A = 12 LOTS
 BLOCK B = 12 LOTS
 TOTAL = 24 LOTS

PROPERTY LOCATED IN LAND LOT 150
 DRAWN BY: R. KEMPER
 DATE: JULY 22, 1995

THIS PLAT HAS BEEN CALCULATED FOR ACCURACY AND FOUND TO HAVE A PERCENTAGE OF 100% IN ACCURACY.
 THE TOTAL AREA OF THIS PLAT IS 6,912.88 ACRES.
 THE TOTAL AREA OF THE ORIGINAL SURVEY WAS 6,912.88 ACRES.
 THE PERCENTAGE OF ACCURACY IS 100%.

THIS PLAT RECORDED IN PLAT BOOK PAGE GREENSBORO, GEORGIA